

PRODUCT ACCEPTANCE



Certificate Number: 21.026

Valid Until: 21/07/2022

FUSION

Fusion House,
Scirocco Close, Moulton Park,
Northampton, NN3 6HE



Product: Fusion X

Conditions of acceptance;

Applicant for the warranty should provide a Structural Engineers Design Philosophy that clearly identifies how lateral stability will be achieved by the steel frame design. This Structural Engineers Design Philosophy should confirm that the stability system can resist the full horizontal wind and notional loadings, without any assistance from the sheathing board.

1. That the design of the system remains unaltered and is always an open panel light gauge steel frame with Y-Wall sheathing board (BBA – 14/5109 – to remain valid). This system has not been assessed for closed panel constructions or with any other sheathing board products.
2. Acceptance limited to 10 stories when used as a loadbearing structure.
3. System should not be used lower than 150mm above external ground level, system should not be used for ground floors.
4. That site installation of the system is carried out by the certificate holder, or companies under the direct supervision of the certificate holder. Where installation is carried out by third party companies, details of that company must be provided.
5. Full detailed specifications and plans and structural calculations (including uplift and overturning) based on the design philosophies presented in Fusion System Manual must be provided prior to the works commencing on site to show the proposed works will meet all the requirements of Chapter 6.6 of the Technical Manual.
6. Masonry and other heavy claddings should be laterally restrained by the stud walls, but vertical loads from such claddings require project specific design and should not be carried out by the stud walls.
7. Details of corrosion protection must be provided and where in a coastal location (within 5km of the shoreline); the designer must provide a detailed assessment of the protection and maintenance provisions to be put in place due to enhanced corrosive environment.
8. That foundation design details and calculations are provided and accepted on project specific basis.
9. That Part B compliance is assessed on a project specific basis.
10. Sound testing to be provided on a site by site basis to show Part E compliance.

PRODUCT ACCEPTANCE



11. Please be aware Fusion Manual details are indicative only and should not be used outside of steel frame design or as acceptance of any elements other than the steel frame. Please make sure that elements outside of the steel frame are compliant with Warranty Technical Manual.
12. Erection/installation of panels to be carried out in accordance with Fusion manual and SCI certificate.
13. Grade of steel used is S390 as per System Manual with a zinc coating of 275 g/m²
14. That details of the cladding system (including support system) are to be provided and agreed on a project specific basis.
15. That a drained cavity is provided, minimum width to be in accordance with Section 6.6.12 of the Technical Manual
16. That a breather membrane is always required to the structural frame
17. That details of the damp proofing proposals around window and door openings are provided on a project specific basis.
18. That a vapour barrier is always provided to the inner face of the Fusion panels.
19. Typically wall ties should be at vertical spacing of not more than 450mm and horizontal spacing of 600mm (3.7 ties/m²) and within 225 mm of the reveal
20. Project specific elements should be gathered by the Risk Management Surveyor to check compliance with Warranty Technical Manual requirements.
21. Roofs to be constructed in accordance with Warranty Technical Manual requirements.

Premier Guarantee has awarded this Certificate to the company named above for the product described herein. This product has been assessed by Premier Guarantee as being fit for its intended use provided it is installed, used and maintained as set out in the System Acceptance Document.

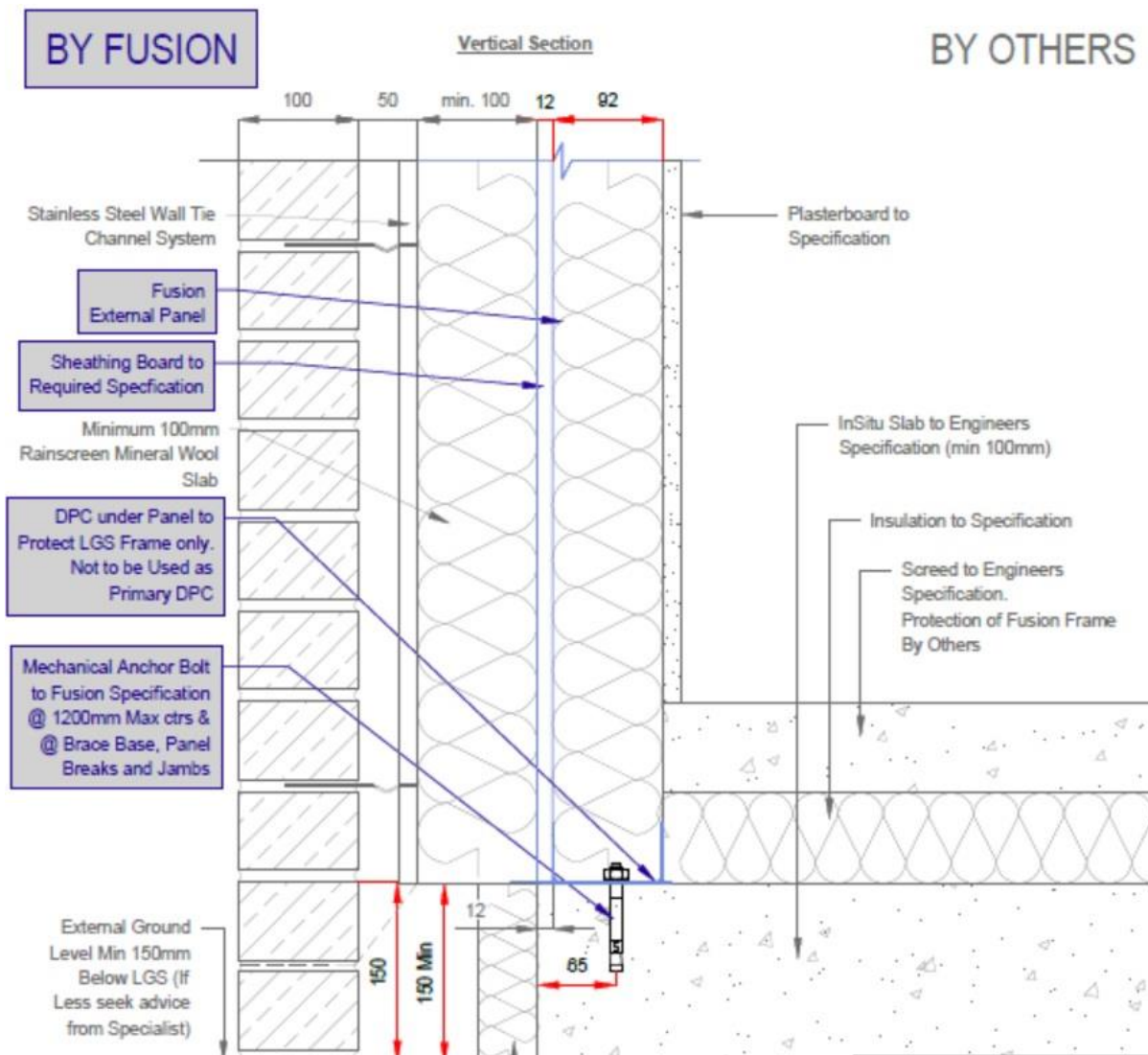
Date: 21/07/2021

Signed: 

PRODUCT ACCEPTANCE



PLEASE NOTE THE BELOW DRAWINGS ARE INDICATIVE AND THE PRODUCT ACCEPTANCE IS ONLY FOR FUSION X PANELS (OPEN PANEL LIGHT GAUGE STEEL WITH SHEATHING BOARD ONLY). ALL OTHER ITEMS SHOULD BE INSTALLED AND CONSTRUCTED IN ACCORDANCE WITH THE WARRANTY TECHNICAL MANUAL REQUIREMENTS.



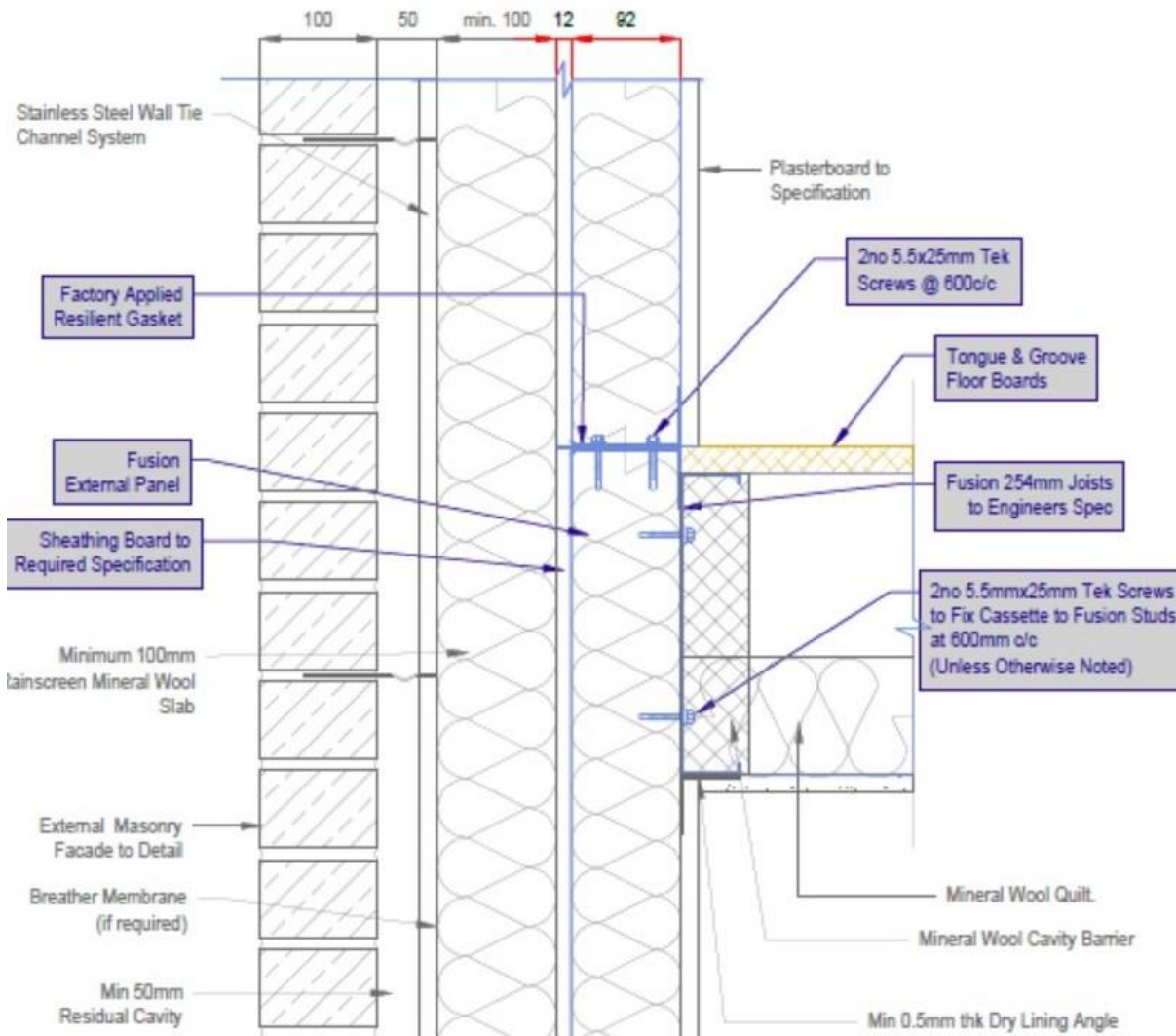
SOLE PLATE CONNECTION (Floor construction, substructure and internal plasterboard outside scope of acceptance)

PRODUCT ACCEPTANCE

BY FUSION

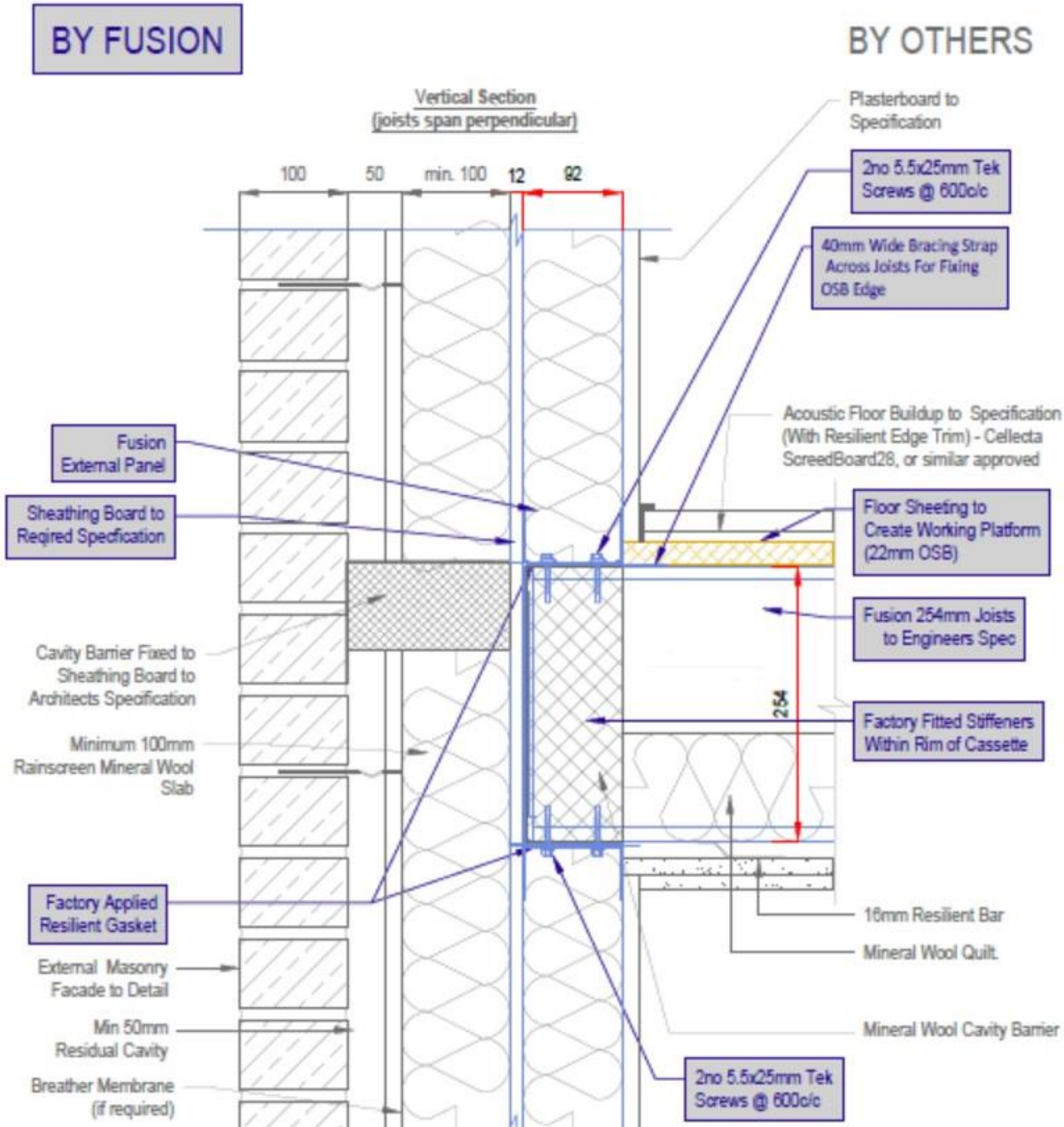
BY OTHERS

Vertical Section
(joists span parallel)



INTERMEDIATE FLOOR CONNECTION (External leaf and internal plasterboard outside scope of acceptance)

PRODUCT ACCEPTANCE

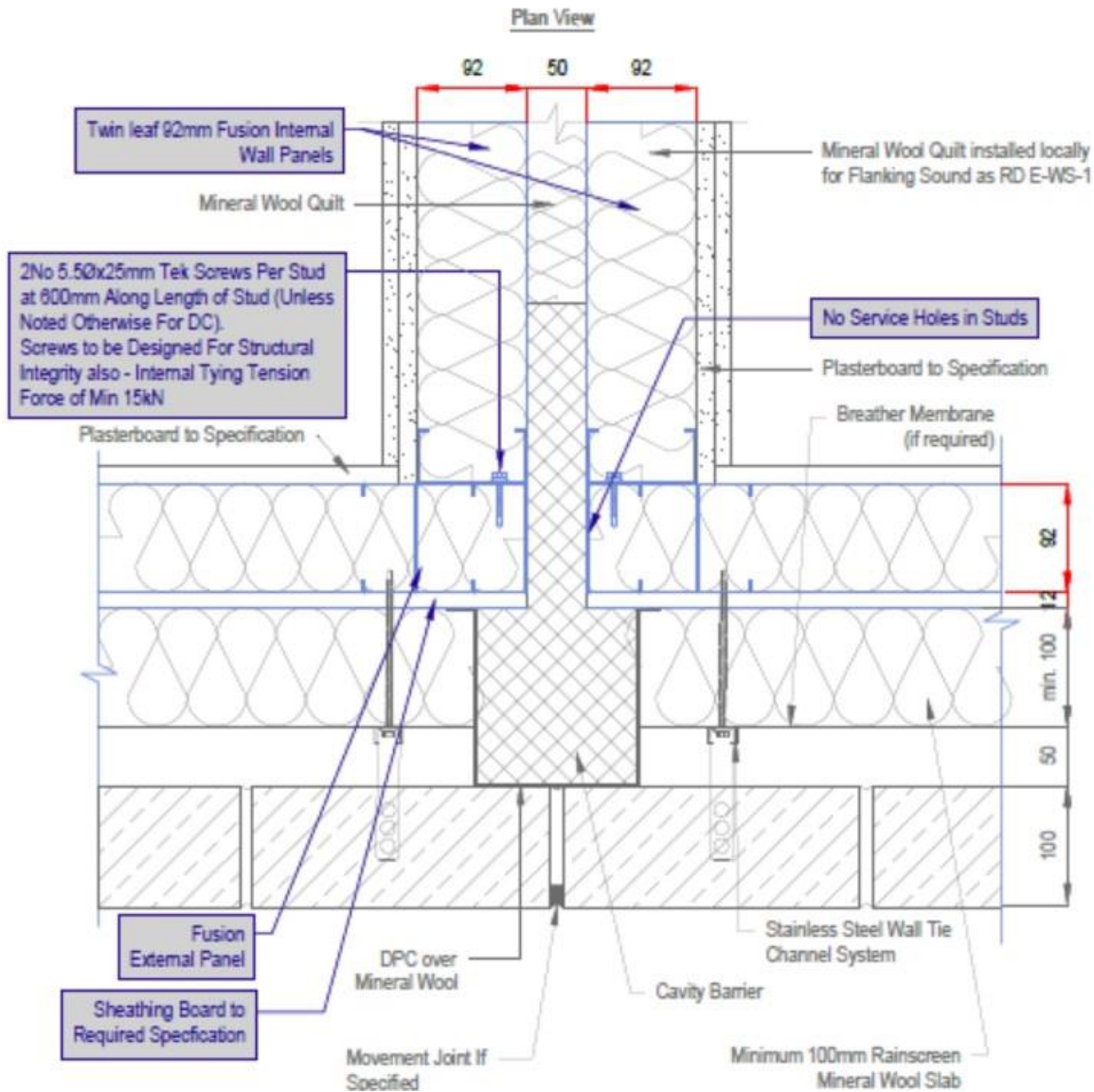


INTERMEDIATE FLOOR CONNECTION COMPARTMENT FLOOR (External leaf, cavity barriers and internal plasterboard outside scope of acceptance)

PRODUCT ACCEPTANCE

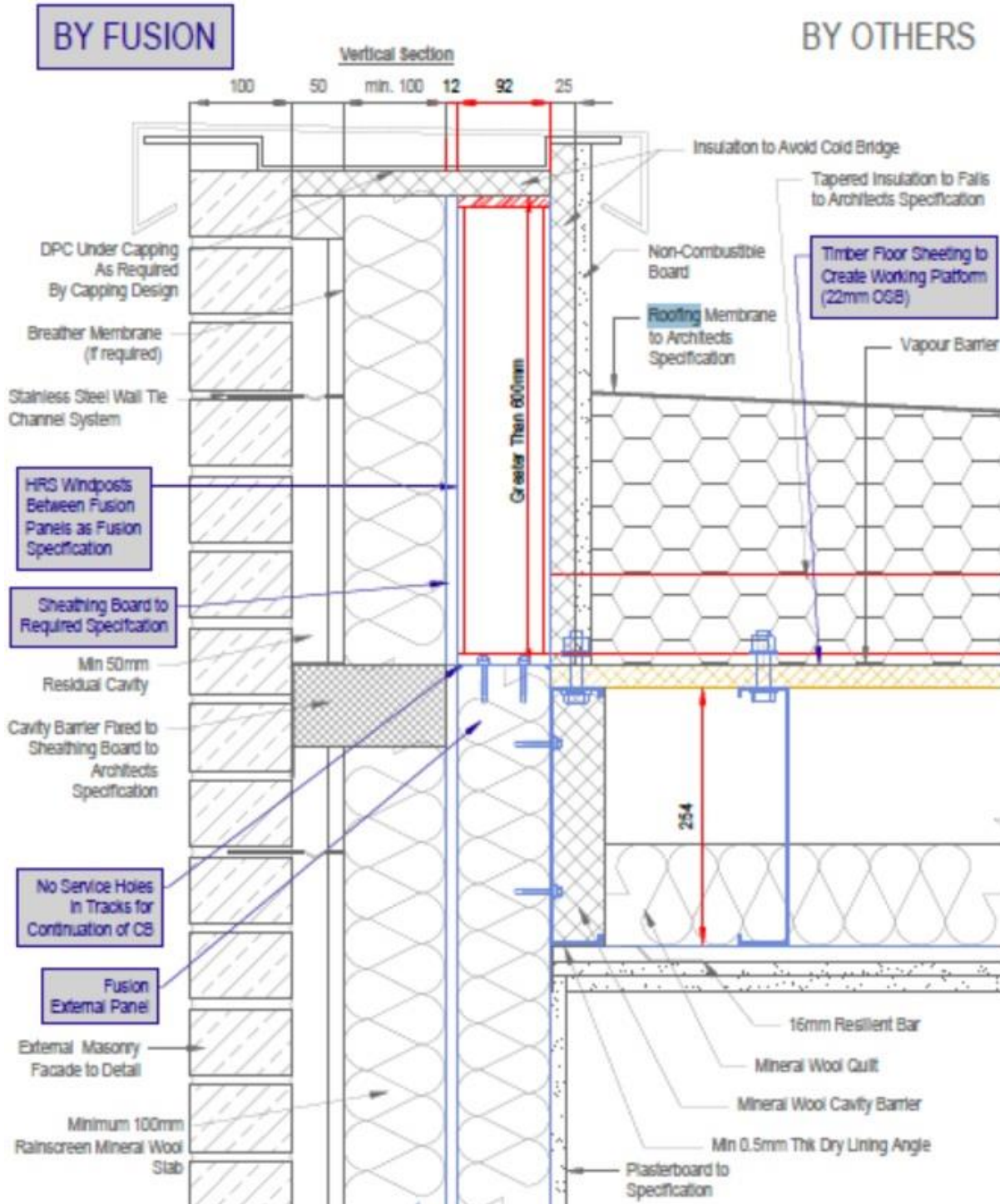
BY FUSION

BY OTHERS



PARTY WALL (External leaf, cavity barriers and internal plasterboard outside scope of acceptance)

PRODUCT ACCEPTANCE



EAVES (roof construction, cavity barriers and external leaf outside scope of acceptance)